

Dream City
KOLKATA

About Project

Since the beginning of time, green has signified growth and it was the colour of the heavens in the Ming Dynasty. "DREAM CITY KOLKATA" Township Project is going to develop a modern town in Kolkata, with excellent communication to all parts of Kolkata. It is situated in a peaceful environment just a little distance from Metro. It promises you an idyllic gateway from the pollution and congestion of Kolkata yet be a near to all daily amenities in laps of nature. However "DREAM CITY KOLKATA" is consists with Residential Land, Duplex & Bungalows. "DREAM CITY KOLKATA" is going to fulfill the dreams of common man within an affordable price. The amenities are as follows: Highland, Water Supply, Electricity Supply, Drainage, Road, Lake, Children Park, and Community Hall etc. Hand over will made after all developments.



About Project

Since the beginning of time, green has signified growth and it was the colour of the heavens in the Ming Dynasty. "DREAM CITY KOLKATA" Township Project is going to develop a modern town in Kolkata, with excellent communication to all parts of Kolkata. It is situated in a peaceful environment just a little distance from Metro. It promises you an idyllic gateway from the pollution and congestion of Kolkata yet be a near to all daily amenities in laps of nature. However "DREAM CITY KOLKATA" consists with Residential Land, Duplex & Bungalows. "DREAM CITY KOLKATA" is going to fulfill the dreams of common man within an affordable price. The amenities are as follows: Highland, Water Supply, Electricity Supply, Drainage, Road, Lake, Children Park, and Community Hall etc. Hand over will be made after all developments.

About Us

Our Company is a young, dynamic & vibrant Land Developer from Kolkata formed to fulfill the aspiration of people who have their own houses. Our vision is to provide Quality, Reliability & Satisfaction of every Client. We promise to maintain a quality in Development and Handover of project in stipulated time with well design and amenities.

Renowned Hospital & Nursing Home

1. Bharat Sevashram Snagha Hospital 4km.
2. NCP Dental Hospital 2.5km.
3. ESI Hospital 4km.
4. Kasturi Nursing Home 5km.
5. BMRI Hospital 5km.
6. Swadesh Bose Hospital 5km.
7. Humanity Hospital 3km.

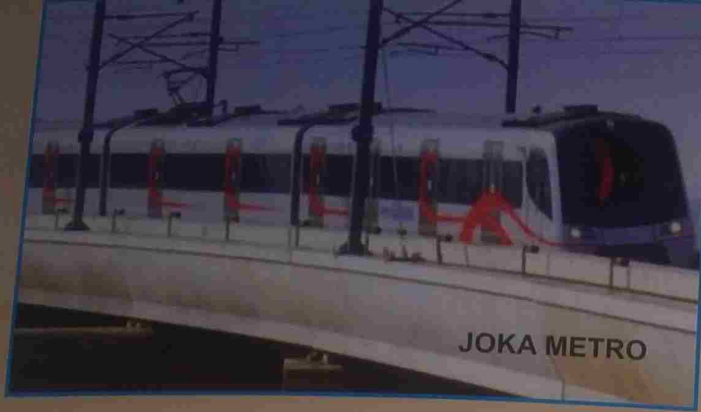
Renowned School & College nearby

1. El-Bethel School/College 2.5km.
2. Gems Academia School 3km.
3. Delhi Public School 3km.
4. Praxis Business School 3km.
5. Pailan World School 3.5km.
6. IIM Joka Management 2.5km.
7. Vivekananda Mission School 5km.

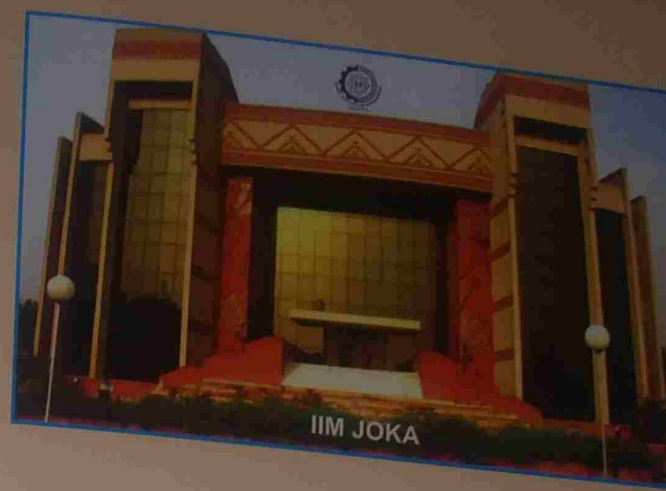
Transportation Nearby

1. Taratala to Thakurpukur auto
2. Joka Metro Station 2.5km.
3. Bus no. 75 : Babughat to Raipur
4. Bus no. SD 26 : Babughat to Burul
5. Bus no. SD 22 : Dharmatala to Dighir Park
6. Express bus Dughalarh to Bibirhat
7. Bus no. SD 8 Nandi Bagan to Bibirhat





JOKA METRO



IIM JOKA

Renowned School and Colleges Nearby:

- El-Bethel School / College - 2.0 Km.
- Vivekananda College - 4.0 Km.
- Barisha High School - 6.5 Km.
- Pailan World School - 5.0 Km.
- Vivekananda Mission School - 4.0 Km.
- IIM Joka Management - 4.0 Km.
- Kalagachia High School - 3.0 Km.
- Raspuj High School - 1.5 Km.
- Dream Institute of Technology - 2.0 Km.
- Gems Academy International School - 3.0 Km.
- DPS Joka - 3.5 Km.
- Joka Metro - 3.5 Km.
- Army Camp

Beside the Project



BHARAT SEVASHRAM HOSPITAL



ESI Hospital & Medical College

Renowned Hospital and Nursing Home Nearby:

- Bharat Sevasram Sangha Hospital - 4.0 Km.
- Humanity Hospital - 4.0 Km.
- NPC Dental Hospital - 2.0 Km.
- ESI Hospital - 3.0 Km.
- Kasturi Nursing Home - 5.0 Km.
- BMRI Hospital - 2.5 Km.
- Swadesh Bose Hospital - 5.0 Km.

AMENITIES

Road= 20 ft & 16 ft

Water Connection

Electricity

Drainage

Park , Play Ground , Lake

Community Hall , Club House

CCTV (24*7)

Security (24*7)



Block = A

Block = B

Block = C

Area Statement:

Net-	945KH-00CH-00SFT
C. PGS. & ETC.:-	251KH-00CH-00 SFT
TOTAL=	1206KH-00CH-00 SFT
	60B-06KH-00CH-00SFT
	(More or Less)

Area Statement:

Size-54'-0"X33'-4"	= 2KH-08CH-00'
Size-50'-0"X30'-0"	= 2KH-08CH-00'
Size-54'-0"X30'-0"	= 2KH-08CH-00'
Size-48'-0"X30'-0"	= 2KH-08CH-00'
Size-40'-0"X36'-0"	= 2KH-08CH-00'

Proposed Scheme Special Layout Plan of Sweep Real Estate Private Limited. 142/A.B.H. Road ThakurPukur (Check Post) Kolkata - 700 063.
 AT-Mouza-Raspuja & Nahazari, J.L. Nos-15 & 14 R.S. No-92 & 91, P.S. Bishnu Pur. Dist-24 PGS (South) Under Raspuja & Nahazari G.P. Scale-1"=50'-0"

SPECIAL PLOT

Plot Size	Place	Rate	Plot Value	Booking (50%)	EMI (18 Months)
2 Cuttha	General	3,00,000/-	6,00,000/-	3,00,000/-	16,667/-
2 Cuttha	Corner	3,25,000/-	6,50,000/-	3,25,000/-	18,056/-
3 Cuttha	Corner	3,25,000/-	9,75,000/-	4,87,500/-	27,084/-

BLOCK - A

Plot Size	Place	Rate	Plot Value	Booking (25%)	EMI (36 Months)
2 Cuttha	General	2,50,000/-	5,00,000/-	1,25,000/-	10,417/-
2.5 Cuttha	Corner	2,75,000/-	6,87,500/-	1,71,875/-	14,323/-
3 Cuttha	Corner	2,75,000/-	8,25,000/-	2,06,250/-	17,188/-

BLOCK - B

Plot Size	Place	Rate	Plot Value	Booking (25%)	EMI (36 Months)
2 Cuttha	General	2,25,000/-	4,50,000/-	1,12,500/-	9,375/-
2 Cuttha	Corner	2,50,000/-	5,00,000/-	1,25,000/-	10,417/-
2.5 Cuttha	General	2,25,000/-	5,62,500/-	1,40,625/-	11,719/-
2.5 Cuttha	Corner	2,50,000/-	6,25,000/-	1,56,250/-	13,021/-

BLOCK - C

Plot Size	Place	Rate	Plot Value	Booking (25%)	EMI (36 Months)
2 Cuttha	General	1,75,000/-	3,50,000/-	87,500/-	7,292/-
2 Cuttha	Corner	2,00,000/-	4,00,000/-	1,00,000/-	8,334/-
2.5 Cuttha	General	1,75,000/-	4,37,500/-	1,09,375/-	9,115/-
2.5 Cuttha	Corner	2,00,000/-	5,00,000/-	1,25,000/-	10,417/-

Dream City KOLKATA

Location Map



Behala

Diamond Harbour

40 ft metro road

project





FIND YOUR DREAM HOME

Want a modern home for your family
in a beautiful location.

CONTACT

 9883098021

 www.facebook.com/mykolkataproperty









REDMI NOTE 5 PRO
MI DUAL CAMERA





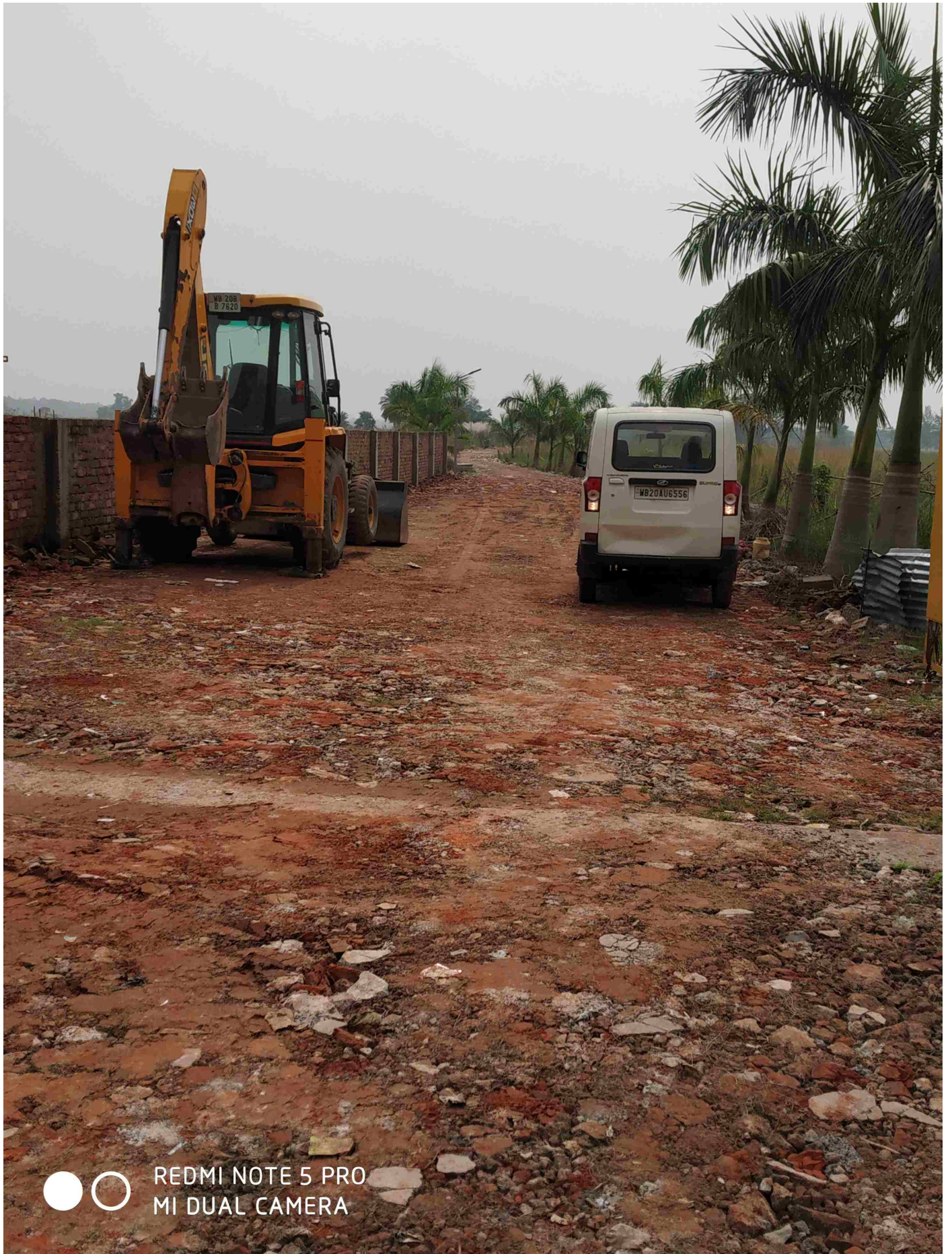


Aur project under C.C.TV Covered area 24 Hours









REDMI NOTE 5 PRO
MI DUAL CAMERA



REDMI NOTE 5 PRO
MI DUAL CAMERA



REDMI NOTE 5 PRO
MI DUAL CAMERA





REDMI NOTE 5 PRO
MI DUAL CAMERA